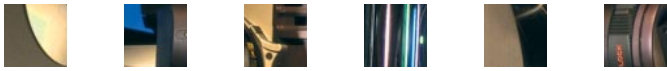




aw z2

Anamorphic Wide Angle Zoom

ULTRA PRECISION EQUIPMENT FOR THE MOTION PICTURE INDUSTRY



SUMMARY OF FEATURES

- Front anamorphic design for superior imaging
- 40-80mm continuous zoom range
- T2.8 full aperture with constant aperture at all zoom and focus positions
- 3¼' close focus
- Standard focus, zoom, and T-stop gear locations
- Dual side engraving for focus, zoom, and iris scales

The new Panavision ANAMORPHIC WIDE ANGLE ZOOM [AWZ2] lens is the first modern zoom lens to use anamorphic elements at the front of the lens. The front

The Anamorphic Zoom adds another choice to Panavision's already vast lens selection. Optically, the Anamorphic Wide Angle Zoom combines high contrast and resolution, good

anamorphic design eliminates stop loss, and enables superior image quality, with reduced aberrations and improved field illumination. This compact zoom has a focal length range of 40mm to 80mm, with an aperture of T2.8, and constant aperture at all zoom and focus positions.

The Anamorphic Wide Angle Zoom close focuses down to 3¼ feet, and it incorporates Panavision's patented anamorphic squeeze control, which eliminates the "mumps" at close focus.

field illumination, and low veiling glare, ghosting, and distortion. Focus, T-stop, and zoom scales are engraved on both sides of each lens.

Because of its good imaging performance, this lens is intended to be used for both zooming and at fixed focal lengths, offering exceptional versatility to cinematographers.

Performance and size make this zoom lens comparable to our E series anamorphic primes.