

GIRAFFE CRANE

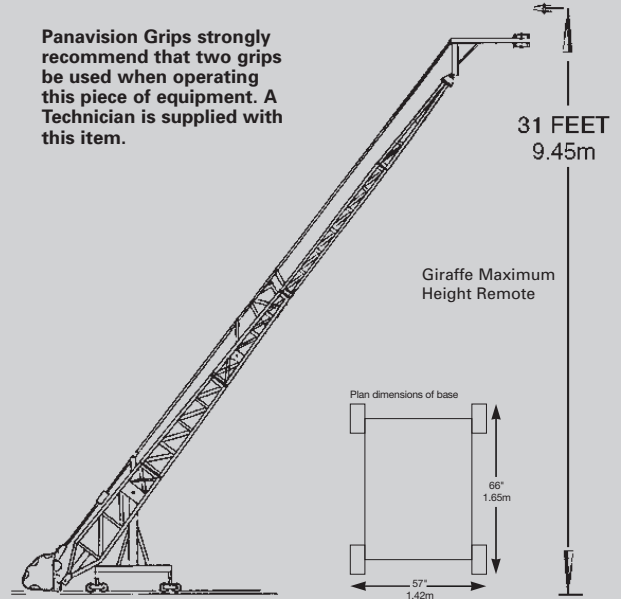
GIRAFFE CLASSIC

Specifications

Maximum Lens Height	31'	945 cm
Drop Down	17' 6"	533 cm
Maximum Reach	31' 6"	944 cm
Maximum Length	38' 6"	1173 cm
Minimum Width on Track Mode 1	2' 4"	73 cm
Minimum Width on Track Mode 2-5	3' 9"	114 cm
Minimum Width on Wheels	4' 8"	142 cm
Maximum Doorway Height	7' 6"	228 cm
Travelling Weight (w/o Ballast Weight)	648 lbs.	294 kg



Panavision Grips strongly recommend that two grips be used when operating this piece of equipment. A Technician is supplied with this item.



	Max. Platform Height	Draw Back	Min. Lens Height Underslung	Max. Camera Rise	Max. Load (2 Crew)	Max. Load (1 Crew)	Max. Load Remote
Dolly	1.7m 5'6"	-	1.0m 3'3"	-	250 kg 550 lbs.	-	-
Mode 1	3.6m 11'8"	-	-0.025m -9"	2.1m 6'10"	250 kg 550 lbs.	-	150 kg 330 lbs.
Mode 1*	4.9m 16'0"	-	1.5m -4'9"	4.7m 15'4"	-	160 kg 350 lbs.	150 kg 330 lbs.
Mode 2	4.9m 16'	-	0.5m -1'7"	3.7m 12'0"	250 kg 550 lbs.	-	150 kg 330 lbs.
Mode 3	6.15m 20'2"	-	-1.9m -6'2"	6.4m 21'0"	225 kg 500 lbs.	-	150 kg 330 lbs.
Mode 4*	7.5m 24'6"	-	-3.2m -10'5"	9.0m 29'3"	-	160 kg 350 lbs.	150 kg 330 lbs.
Mode 5*	9.5m 31'2"	-	-5.4m -17'6"	13.0m 42'3"	-	-	100 kg 220 lbs.

Reach Fulcrum to Lens	Min. Width on Track	Min. Width on Wheels	Track Width	Weight Assembled Crane	Weight Loaded Crane	Weights to Balance
-	.75/1.17m 2'4"/3'9"	1.45m 4'8"	.62/1m 2'/3'3"	60 kg 135 lbs.	310 kg 680 lbs.	@20 kg -
2.4mm 7'10"	.75/1.17 2'4"/3'9"	1.45m 4'8"	.62/1m 2'/3'3"	170 kg 366 lbs.	884 kg 1940 lbs.	-
4.25m 13'10"	.75/1.17m 2'4"/3'9"	1.45m 4'8"	.62/1m 2'/3'3"	185 kg 400 lbs.	1100 kg 2420 lbs.	-
3.4m 11'0"	1.17m 3'9"	1.45m 4'8"	1m 3'3"	225 kg 495 lbs.	860 kg 1890 lbs.	- 6
5.1m 16'6"	1.17m 3'9"	4.15m 4'8"	1m 3'3"	250 kg 550 lbs.	1225 kg 2695 lbs.	- 8
6.7m 21'10"	1.17m 3'9"	1.45m 4'8"	1m 3'3"	270 kg 592 lbs.	1180 kg 2596 lbs.	- 7-1/2
9.5m 31'6"	1.17m 3'9"	1.45m 4'8"	1m 3'3"	293 kg 648 lbs.	1145 kg 2515 lbs.	- 15